



Rock Solid in Real Estate

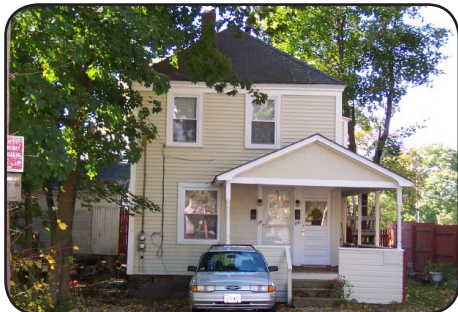
Prudential



Prime Properties

www.AnneChadwickRealty.com

978-314-0485



Athol \$149,900

Affordable 2 family can get you into home ownership with income to help with mortgage payments. Great condition, easily maintained, ready for occupancy.



Athol \$159,900

Super Buy! After 23 yrs owners moved to smaller home. Well maintained, move in condition. Above grnd pool, newer furnace, windows, siding. Easy to Show.

Thinking of Selling?

Receive a free Market Analysis & helpful tips to sell your home. Once listed, your home will be marketed using personally designed advertising in the Media, MLS, at Prudential & Realtor.com and my Personal WebSite.

Your Home Could Be Featured Here!

30+ years of experience show that enthusiasm, hard work, a keen sense of responsibility and a commitment to reliability & trust are essential to meeting your needs in real estate.

Using the full power of the Prudential Network, I will market your home in the highest professional manner.

That is My Pledge To You!



Athol \$173,500

2 min. walk to Lake Mattawa's beach. Situated on beautifully landscaped 1/2 acre, this 3 bdrm ranch has a finished family rm with bar, pool table & pellet stove.



Athol \$159,900

Priced to Sell! Great value in this 2 family. Excellent downtown location. Many Possibilities. Large, bright rooms offer great professional space & rental income.

?? Why Buy Now ??

This is one of the best times to purchase your home. We are experiencing a unique combination of lower home prices AND low interest rates. These two variables seldom occur at the same time.

Don't Let This Buyer's Market Pass You By! Purchase now and you will realize the appreciation and increased equity when values rise again.....and they will !

Ready to Find Your Home?

Log on to AnneChadwickRealty.com where you will find the entire Mass Real Estate Market at your fingertips. Feel free to contact me anytime @ **978-314-0485**.

Mortgage Programs are still available to fit **Most Incomes & Budgets!**